

Connecticut  
Consortium on  
School  
Attendance



December 3, 2015

# What is the Consortium?

- An association of local school and statewide agency representatives
- Focused on improving school attendance through data-driven planning
- Convened by the Juvenile Justice Advisory Committee (JJAC) in 2001



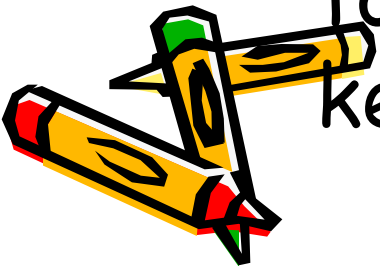
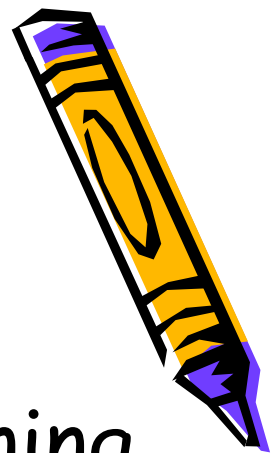
Grants to  
local school  
districts

Meetings  
and  
trainings

Shared  
attendance  
database

# Why School Attendance

- Promotes academic & social learning
- Provides connections with adults, peers, and the community
- Builds habits of attendance necessary for employment
- Provides supervision and structure to the day, limiting free time and keeping students out of trouble



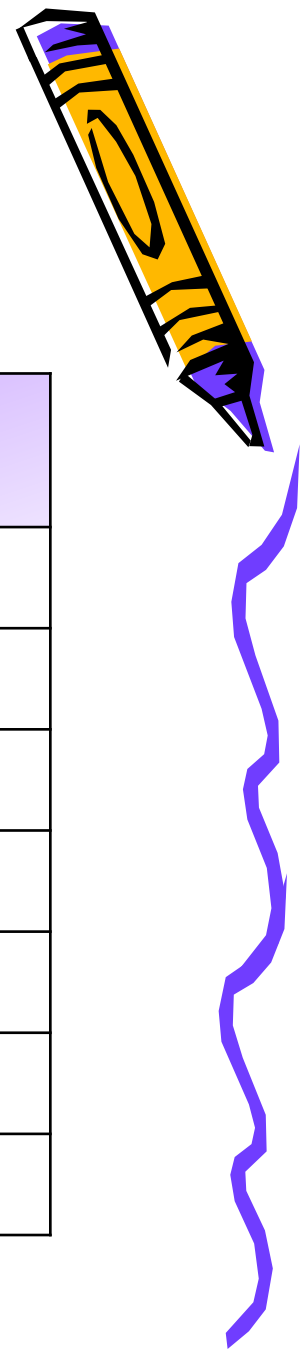
# School District Members

- Ansonia
- Bethel
- Bloomfield
- Bridgeport
- Canterbury
- Derby
- Fairfield
- Griswold
- Hamden
- Hartford
- Killingly
- Manchester
- New Britain
- New Haven
- Norwich
- Plainfield
- Region 10
- Region 13
- Southington
- Stonington
- Vernon
- Wallingford
- Waterbury
- Waterford
- Windham

Currently 25



# ADA Over Time

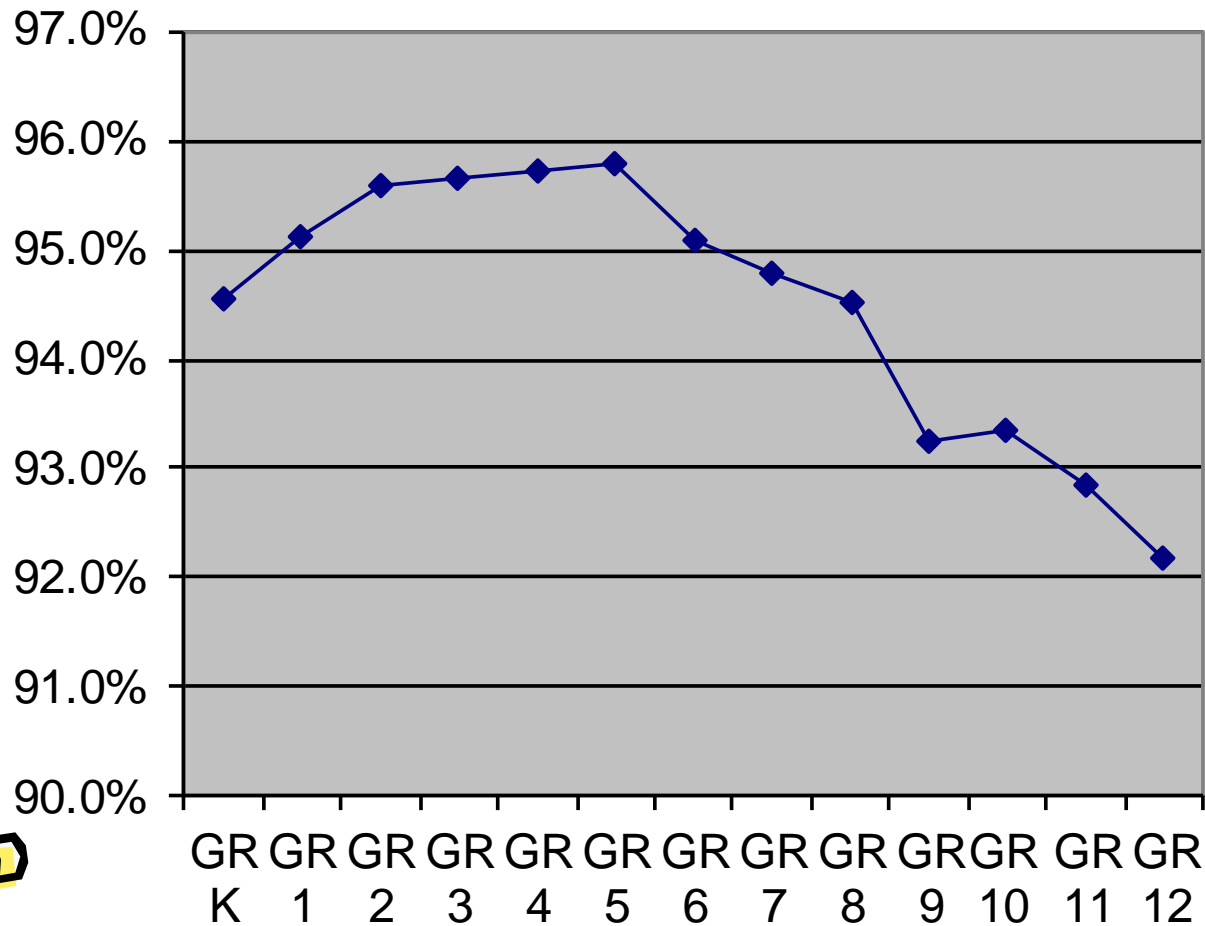


Year*	Number of Students	Average Daily Attendance
08-09	154,129	94.4%
09-10	162,795	94.3%
10-11	159,674	94.3%
11-12	191,727	94.1%
12-13	209,601	94.3%
13-14	154,854	94.4%
14-15**	138,377	93.8%

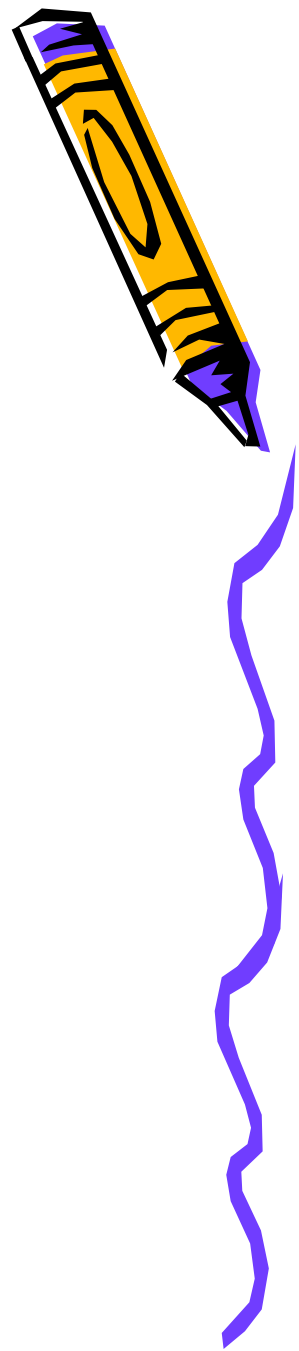


\* Districts in Consortium data vary by year  
\*\*Missing data for Derby and New Haven

# 2014/15 ADA by Grade\*



\*Missing data for Derby, Hamden and New Haven



# Attending < 90% or Chronic non-attenders



2014/2015*	# Attending < 90%	% Attending < 90%
Consortium	20,285	14.7%

Ranges from 3.9% to 23.7%

\*Missing data for Derby and New Haven





# Attending < 90% by Day Range



Day Range	#	ADA	%
18-28	12246	87.5%	61.4%
29-38	3869	81.1%	17.1%
39-48	1932	74.8%	7.4%
49-58	1291	68.6%	4.6%
59-68	845	63.1%	3.0%
69-78	447	56.9%	1.7%
79-88	322	51.3%	1.3%
89-98	213	46.1%	0.9%
99-182	158	40.0%	0.6%



2014/2015 data--missing data for Derby, Hamden and New Haven

# Recommendations

- Student attendance needs to be a higher priority
- There should be attendance targets
- Local districts should have data-driven planning processes in place
- Training and technical assistance should be available

